

Introducing The Next Generation of DEPRO

Smarter, Faster, More Accurate

What's New?

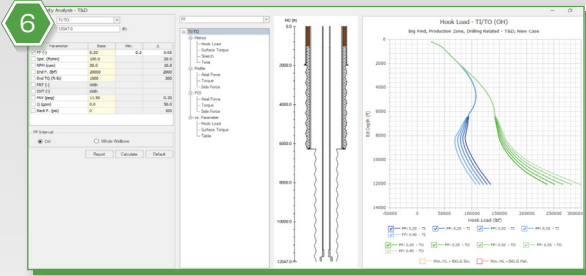
The new generation of **DEPRO** advances well engineering simulation with cutting-edge enhancements, delivering superior accuracy, efficiency, and decision-making power to your operations.

| | New Feature | What It Does | Key Benefit |
|---|--|--|---|
| 1 | Hierarchical Well Structure | Organizes case files into a structured four-level tree. | Streamlines well planning and improves data management. |
| 2 | Enhanced Field Data Calculation | Integrates real-time field data for torque, drag, and hydraulics calculations. | Delivers more precise and reliable simulations. |
| 3 | BHA Pattern Database | Stores drilling tools and casing assembly data. | Reduces errors and data-entry time. |
| 4 | Pressure & Temperature Dependent Fluid Properties | Simulates fluid behavior based on pressure and temperature variations. | Enhances modeling accuracy for complex well conditions. |
| 5 | Centralizer Impact on Torque and Drag | Evaluates how centralizer placement affects torque and drag forces. | Optimizes wellbore stability and tool positioning. |

New Feature

What It Does

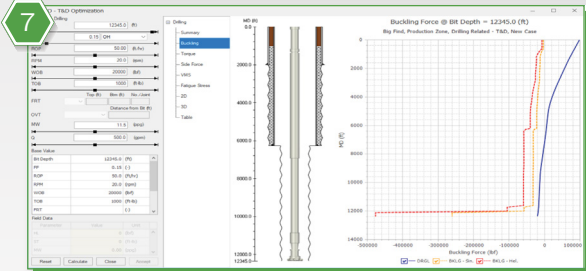
Key Benefit



Torque and Drag Sensitivity Analysis

Assesses tool presence/absence impacts on torque and drag.

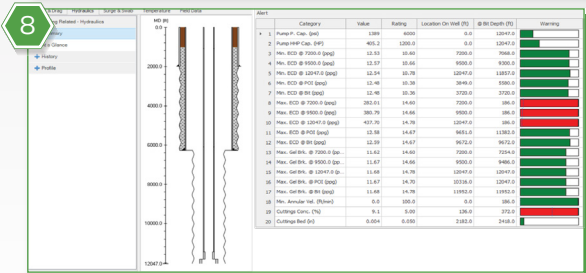
Supports better tool deployment decisions.



Optimization for Torque, Drag and Hydraulics

Provides built-in tools for fine-tuning well designs.

Automates optimization for peak performance and reliability.



Alert System

Notifies users when torque, drag, or hydraulics thresholds are exceeded.

Prevents issues before they impact operations.

Why Upgrade?

- **Enhanced Efficiency:** Advanced organization and optimized workflows reduce setup time and streamline execution.
- **Greater Accuracy:** Real-time field data integration and pressure-dependent fluid properties boost simulation precision.
- **Improved Reliability:** Optimization tools and proactive alerts mitigate risks and prevent operational issues.
- **Cost Savings:** Minimized downtime and reduced errors lead to significant cost reductions.
- **Smarter Decision-Making:** Sensitivity analysis and real-time calculations provide insights for optimal well performance.

Existing Major Features At-A-Glance

- Torque, drag, and stress calculations.
- Soft and stiff string models.
- Hydraulics calculations (pressure, ECD, hole cleaning, surge/swab).
- Buckling prediction and field data comparison.
- 2D/3D animation and multi-language interface.

Take Your Well Engineering to the Next Level!

This next generation of **DEPRO** delivers the power, precision, and efficiency you need to optimize well operations. Upgrade today for a smarter, more effective approach to torque, drag, and hydraulics simulation.



6100 Corporate Dr., Ste 448, Houston, TX 77036, USA

(713)981-5558 sales@pvisoftware.com www.pvisoftware.com

Schedule Demo